

FROM THE STUDY

Friday 22nd May 2009

Another busy half-term draws to a close. Our Forms 6 and 2 have completed their SAT's and the children generally have made the most of the fine weather and thrown themselves into their work and play with gusto.

The half-term break has come at just the right time and gives us all the chance to re-charge the batteries before the final six and a half weeks of the year! Enjoy the break and come back energised and eager to make the most of all the activities and events on offer!

HEADMASTER'S AWARDS

Congratulations to Nikoletta Croon (KGM) for English, Sophie Bright (3S) for Maths, Poppy Allen and Mackenzie Maberly(4D) for RE, Emma Baker(4D) for English, Emily Blundell and Benji Mitchell(4D) for ICT, Katie Gardner, Matthew Gilham, Gemma Morgan, Matthew Morley-Jacob and Emily Scott (5G) for History. Finally, Anna Kinge (6T) for her Tower of London report. Well done to you all.

POLITENESS AND COURTESY CUP

Well done to Phoebe Wickham, winner of the Politeness & Courtesy Cup this week.

MUSIC NEWS.

Please note that the House Music Competition will now start at 5.30pm on Thursday, 4th June.

PLAY EQUIPMENT

After much consideration and a great deal of soul searching it has been agreed by the school and the Friends of Widford Lodge, that the wooden play equipment in the woods will be taken down. Unfortunately, although the equipment is still relatively new, certain parts of it are no longer safe for the children to use, and as such is currently 'out of bounds'. We all recognise how disappointing this appears and I can assure you it was not a decision taken lightly.

Parts of the equipment are still sound and in good condition and if any parent is interested in securing the 'little house' and slide please drop me a line in the study. Any proceeds from this will go back to FOWL with likelihood it will be used to purchase a new 'Wendy House'.

SOME REMINDERS

Could you please ensure that all items of uniform and kit especially towels, swimming costumes and cricket sweaters are named.

DOGS ON SCHOOL PREMISES

There seems to be an increasing number of dogs being brought into school. Could I ask parents to be mindful of the fact that not all of the children are comfortable with dogs. We would prefer no dogs on the site. If it is essential that the dog comes into school they should not go further than any of the white gates.

REQUESTS FOR ABSENCE FROM SCHOOL

I can't fail to notice that an increasing number of families are taking holidays in term time. This is something that we don't encourage but realise that on occasion can't be avoided. For all such absences to be authorised parents must, in the first instance, write to the Headmaster seeking permission.

SCHOOL TEAMS

Please find attached a copy of the school's policy for team and squad selection. This policy has been in place for at least 2 years. The policy states quite clearly how we try and do things at Widford Lodge with regard to selecting the teams that represent the school.

CRICKET NEWS

1st X1 v Alleyn Court, Friday 15th May

Alleyn Court 115 for 5 in 25 overs	Sam T	2 for 6
	Paul M	1 for 12
	Matt G	1 for 21
	Matt M-J	1 for 13
Widford Lodge 117 for 1	Sam A	50 not out
	Aaron C	22
	Sam T	14 not out

Widford won by 9 wickets.

A very good all round performance saw Widford gain revenge for last year's crushing defeat. Same great bowling by Sam T and Paul M and a determined batting performance from Sam A and Aaron saw Widford gain a comfortable win,

Colours Sam Alderton

1st X1 v Brentwood, Tuesday 19th May

Widford Lodge 85 for 7 off 25 overs	Will Buttleman	23 not out,
	Matt N	10
	Alfie W	9
Brentwood 86 for 2	Paul M	1 for 12
	Will B	1 for 10

Widford lost by 8 wickets

A good game of cricket against very strong opposition. Against a decent bowling attack supported by some excellent catching Widford struggled to put enough runs on the board to really stretch Brentwood. Only Will B, with a very mature 23 no and some lusty blows from Matt N and Alfie threatened to give some respectability to the final total. Paul M and Will B were the Widford wicket takers bowling straight and making sure that the batsman had to think about every ball.

Colours Paul Martin

1st X1 v Felsted, Wednesday 20th May

Widford Lodge 107 for 3 off 25 overs	Sam T	65 n o
	Alex G	17
	Will B	12 n o
Felsted 108 for 4	Will B	1 for 4
	Matt M-J	1 for 15

Another defeat but a good game of 'proper' cricket nonetheless! Having lost the toss for the second time in two days Sam T asked his openers to pad up but unfortunately they were soon back in the pavilion without troubling the scorers. Sam T and Alex G then began to rebuild the innings with dogged determination and soon began to look more comfortable at the crease as they got their 'eyes in'.

This pair added over 60 for the 3rd wicket before Alex was out for a patient 17. Young Will B then joined his captain at the wicket. By this time Sam was

dispatching the bad balls to the boundary and compiling an excellent 65 n o, supported by the talented Will, who finished on a solid 12.

In reply Felsted had to work hard for their runs but crucially gained early confidence with a succession of quick singles. Despite a flurry of run outs, one coming from a direct hit from Alfie, Felsted hit the winning run with 4 overs to go.

Widford Lost by 6 wickets

Colours Alex Gilham

A busy few days of cricket with the odd setback here and there but many positives too as our young cricketers take on these impressive schools at 1st team level and continue their cricketing education.

Un 9 Cricket

Felsted vs. Widford Lodge 21st May 2009

In sunny and warm conditions, the Under 9 team took on Felsted with great enthusiasm, lead by captain Will Buttleman.

After losing the toss, Widford Lodge were asked to bat. They gave a good account of themselves throughout the innings with some tidy batting and decent partnerships. Will Buttleman and Teddy Mortlock put on 41 together whilst contributions from Joe Burton (10) and Nick Gardner (9) ensured that Felsted were set a challenging target.

After the break, Widford Lodge struggled to find accuracy with their bowling. However, wickets fell as the hosts chased a demanding total. Nancy Hebron, Joe Burton and Teddy Mortlock all took good wickets but the pick of the bowlers were Nick Gardner, taking a wicket and allowing seven runs and Ted Stroud, bowling superbly for his two wickets, no extras and just six runs off his two overs.

As the close of play drew near, Widford Lodge's inaccuracy with the ball cost them dearly. Despite valiant efforts in the field, most notably from Mackenzie Maberly, Felsted finished their batting allotment seven runs clear of Widford's total.

A loss on the day seemed cruel as well as disappointing but the team remained upbeat focusing their thoughts on improved bowling to compliment their terrific batting and fielding.

Man of the Match - Ted Stroud

TOWER OF LONDON

On Thursday, Year 6 went on a train trip to London. Our journey started at Ingatestone station. The first train journey finished at Liverpool Street station. We met Sam A's dad there and he took us to the Tower of London, but on the way he took us to a place where part of 'Harry Potter' was filmed and the Gerkin, which is the big egged shaped glass tower.

When we got to the Tower, Mr Blundell took us around the Tower and gave us some very interesting information. Afterwards, we were put into groups with Mr Trowell, Mrs Trowell, Mr Blundell and Mrs Blundell, and we went to see all the features of over 16 towers.

At 12.00pm we stopped for lunch. While everyone talked about the things they saw. After, we went to see the Crown Jewels, they were fascinating.

**Then it was time to go home. Everyone was tired and their legs were hurting, but we got to go home thinking about the amazing things we did.
By Anna Kinge.**

FOWL SUMMER FAYRE

Please find details of the 'Summer Fayre' attached to this week's 'From the Study'.

FORTHCOMING EVENTS FOR THE WEEK AHEAD.

ROMANS DUTY WEEK

Wednesday 3rd	Un11 'a' & 'b' Cricket v Barnardiston Hall (h) 2.30pm
Thursday 4th	Brentwood Taster Day 9.30am
	House Music Competition 5.30pm
Friday 5th	Senior Choir to Royal Albert Hall
Saturday 6th	Riverside Swimming Gala 6.30pm

WIDFORD LODGE SCHOOL **SQUAD AND TEAM SELECTION**

The school offers, within the normal timetable, a full and varied PE curriculum for all pupils of all abilities. This includes children's participation in house matches and games to promote involvement in team sports. Children are generally very positive about PE and Games and are keen to do as well as possible.

Squads for school teams are chosen on ability, but we are mindful that there are children whose determination and enthusiasm for the sport may not be matched by their skill level but nevertheless deserve recognition. Assessment in PE is on-going and the children's performance is reviewed in lessons and in team practices. There is never a 'closed shop' with regard to any team selection.

We offer a range of sports at a competitive level in addition to normal team games, such as tennis, athletics and cross-country. A child may represent the school in one particular sport or several, depending on his/her talents and abilities.

Additional factors need to be considered with regard to a child's participation in a squad and/or team. For instance it may not be wise for an individual child to miss lessons, which can happen on occasion. A child may become overstretched with regard to extra-curricular commitments. All children need to show an appropriate level of maturity and the right attitude to participate and to represent the school.

Parents are generally very supportive of their child's ability and performance. Children often participate in activities outside school. It is important to note that the standard of inter-school sport, in terms of performance can be very high. As a school we are fortunate to have some very able sportsmen and women. At 1st Team level, we will choose the best team we can. We will always try and run as many other teams as we can so as to give more children the opportunity to represent their school.

Our main aim, as a school is for each child to enjoy sport and to achieve as much as possible in relation to his/her abilities, including individual and team games.

If you have any individual questions about team selection please discuss these initially with the Head of PE. If you have a concern that you feel has not been addressed, then the next step is to refer to the school's complaints procedure, copies of which are can be obtained from the office.

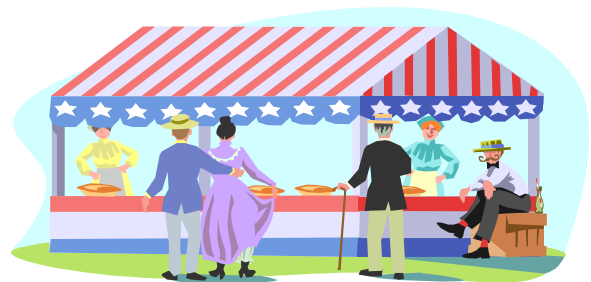


The Friends of Widford Lodge (FOWL) summer fayre is approaching and we need your help with the following:

- Help with manning a stall
- Second hand toys and children's books,
- Small gift items for lucky dip prizes
- Tombola/ raffle prizes (wrapped sweets, biscuits, drinks)

Please leave donations for prizes, secondhand toys etc in the office and we can collect from there.

If you would like to help out on a stall please contact Sam Varley
(samvarley@blueyonder.co.uk)



All proceeds from the Fayre will be split between Widford Lodge and Thriftwood Schools.

Thankyou!!!
